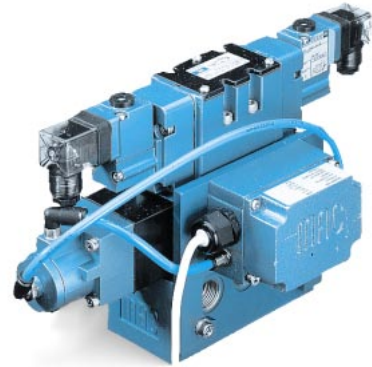


Pressure control system with analogical command signal.

OPERATIONAL BENEFITS

1. The use of an analogical command signal brings increased accuracy in pressure control.
2. A compact unit gathering all components saves room and installation costs.
3. The analog and logic (TTL) outputs allow for constant pressure monitoring from the control unit.
4. Infinite number of pressures available.



COMPONENTS

The Proportional Multi-Pressure Pak is made of the following components :

- one proportional pressure controller PPC5A for pressure selection.
- one (or more) directional valves to be selected as a function of the flow required.
- one remote air pressure regulator for main pressure control.

FIELDS OF APPLICATION

The Proportional Multi-Pressure Pak is suitable for all applications requiring many different pressures, a continuous pressure control and progressive pressure rise or descent. The numerous possibilities of pressures, flows and pressure ranges makes it easy to find the best appropriate configuration.

This system has proved its abilities in the automotive industry, for the operation of welding grips and robots. Many other applications are fulfilled, like pressure selection for any supply network or machinery, force control in a cylinder, tension control on a drum, painting robots control (combination of high flow and accurate pressure control), ...

OPERATION

PROPORTIONAL PRESSURE CONTROLLER PPC5A

This is the pressure selector of the whole system. Depending on the command signal (0 to 10 V or 4 to 20 mA), the PPC5A will adjust the pressure to the requested value.

REMOTE AIR SANDWICH REGULATOR

The outlet port of the PPC5A gives a pressure signal to the sandwich regulator. This one in turn will regulate the main pressure as a function of the command signal.

DIRECTIONAL VALVE(S)

Depending on the application, one or more directional valves will be used. For instance : a 4/2 valve for the welding control (with the regulated pressure) and another one (with the network pressure) for the command of the robot arm (grip movements).



**TECHNICAL
D A T A**

Pressure range :	2 to 8 bar
Output pressure :	Standard : 0.5 to 7 bar, other ranges upon request.

Series	Port size	Flow	Height	Width	Length	Weight
82	G1/4" - G3/8"	900 NI/Min (C _v 0.9)	158,75 mm	190,50 mm	228,60 mm	3,6 kg
6300	G3/8" - G1/2"	2100 NI/Min (C _v 2.1)	165,10 mm	254,00 mm	254,00 mm	5,7 kg
6500	G1/2" - G3/4"	3500 NI/Min (C _v 3.5)	203,20 mm	273,00 mm	254,00 mm	6,8 kg
ISO 1	G1/4" - G3/8"	1100 NI/Min (C _v 1.1)				
ISO 2	G3/8" - G1/2"	2100 NI/Min (C _v 2.1)				
ISO 3	G1/2" - G3/4"	5000 NI/Min (C _v 5.0)				

HOW TO ORDER ?

Please consult factory for the selection of best appropriate PMPP.